



**Water Monitoring Result at C1 - HKCEC Extension  
Mid-Flood Tide**

Date	Time	Weather Condition	Sampling Depth		Water Temperature			pH			Salinity			DO Saturation		DO		Turbidity		Suspended Solids				
			m		°C		-		ppt		%		mg/L		NTU		mg/L							
					Value	Average	Value	Average	Value	Average	Value	Average	Value	Average	Value	Average	Value	Average						
29/6/19	4:30	Cloudy	Middle	2.5	28.40	28.40	28.40	7.79	7.79	7.79	27.38	27.38	27.38	88.1	88.5	89.3	5.88	5.91	5.96	1.95	2.06	2.06	<2	2.00
	4:31		Middle	2.5	28.40	28.40		7.79	7.80		7.79	27.38		27.38	90.2		90.4	6.02		6.03	2.01		2.23	
2/7/19	17:25	Cloudy	Middle	2.5	28.20	28.20	28.20	7.68	7.68	7.68	28.29	28.29	28.29	90.1	91.4	91.1	6.00	6.09	6.07	5.48	5.32	5.36	10	10.50
	17:26		Middle	2.5	28.20	28.20		7.68	7.68		7.68	28.29		28.29	92.8		90.1	6.18		6.00	5.25		5.40	
4/7/19	19:15	Cloudy	Middle	2.5	27.50	27.50	27.50	8.38	8.38	8.38	26.93	26.93	26.93	83.1	83.5	83.6	5.64	5.68	5.68	4.79	4.34	4.34	8	8.50
	19:16		Middle	2.5	27.50	27.50		8.38	8.38		8.38	26.93		26.93	82.8		85.1	5.63		5.78	4.21		4.00	
6/7/19	9:23	Fine	Middle	3.0	27.80	27.80	27.85	7.52	7.52	7.53	26.92	26.92	26.92	84.9	85.0	84.4	5.73	5.79	5.71	3.27	3.20	3.22	<2	<2
	9:25		Middle	3.0	27.90	27.90		7.53	7.53		7.53	26.92		26.92	84.1		83.6	5.67		5.63	3.19		3.20	
8/7/19	10:06	Cloudy	Middle	3.0	28.40	28.40	28.50	7.48	7.48	7.49	25.06	25.06	25.06	82.1	82.4	82.6	5.54	5.55	5.56	3.61	3.61	3.61	4	3.50
	10:08		Middle	3.0	28.60	28.60		7.49	7.49		7.49	25.06		25.06	82.8		82.9	5.58		5.58	3.61		3.61	
10/7/19	14:00	Fine	Middle	3.0	28.00	28.00	28.00	7.86	7.86	7.88	25.62	25.62	25.62	75.6	74.2	75.0	5.11	5.01	5.07	3.07	3.07	3.07	3	3.00
	14:02		Middle	3.0	28.00	28.00		7.90	7.90		7.88	25.62		25.62	75.2		74.9	5.08		5.06	3.07		3.07	
12/7/19	14:15	Cloudy	Middle	2.5	29.30	29.30	29.40	7.50	7.50	7.51	26.92	26.92	26.92	91.8	92.1	92.4	6.04	6.07	6.08	2.40	2.41	2.41	8	7.50
	14:17		Middle	2.5	29.50	29.50		7.51	7.51		7.51	26.91		26.91	93.2		92.3	6.13		6.08	2.41		2.41	
15/7/19	17:15	Cloudy	Middle	2.5	30.30	30.30	30.30	7.95	7.95	7.95	24.39	24.39	24.39	89.6	91.7	89.6	5.89	6.03	5.90	2.90	2.80	2.78	8	8.00
	17:16		Middle	2.5	30.30	30.30		7.95	7.95		7.95	24.39		24.39	87.5		89.7	5.76		5.91	2.85		2.55	
17/7/19	20:57	Cloudy	Middle	2.5	27.30	27.30	27.30	7.81	7.81	7.81	29.82	29.82	29.82	92.5	91.6	92.7	6.20	6.13	6.21	2.23	2.85	2.51	8	8.50
	20:58		Middle	2.5	27.30	27.30		7.81	7.81		7.81	29.82		29.82	93.8		92.7	6.28		6.21	2.27		2.69	
19/7/19	18:30	Cloudy	Middle	2.5	27.10	27.10	27.10	7.69	7.70	7.70	30.07	30.07	30.07	94.5	94.0	93.9	6.35	6.31	6.30	3.62	3.10	3.32	4	4.50
	18:31		Middle	2.5	27.10	27.10		7.69	7.70		7.70	30.07		30.07	94.1		92.8	6.30		6.23	3.24		3.33	
22/7/19	8:41	Fine	Middle	3.0	26.20	26.20	26.25	6.46	6.46	6.47	30.35	30.35	30.35	76.1	76.1	75.7	5.17	5.17	5.14	8.17	8.16	8.17	3	3.00
	8:43		Middle	3.0	26.30	26.30		6.48	6.48		6.47	30.34		30.34	75.3		75.3	5.11		5.11	8.16		8.17	
25/7/19	1:50	Fine	Middle	3.0	27.20	27.20	27.20	7.78	7.78	7.78	30.16	30.16	30.16	89.6	86.5	89.7	6.00	5.79	6.01	2.06	1.95	1.97	4	3.50
	1:51		Middle	3.0	27.20	27.20		7.78	7.79		7.78	30.16		30.16	90.9		91.9	6.09		6.16	2.03		1.83	

Remarks:  
Single underline denotes exceedance over Action Level.  
Double underline denotes exceedance over Limit Level.



**Water Monitoring Result at RW21-P789 - GEC/CRB/SHK  
Mid-Flood Tide**

Date	Time	Weather Condition	Sampling Depth	Water Temperature		pH		Salinity		DO Saturation		DO		Turbidity		Suspended Solids								
				°C		-		ppt		%		mg/L		NTU		mg/L								
				Value	Average	Value	Average	Value	Average	Value	Average	Value	Average	Value	Average	Value	Average	Value	Average					
29/6/19	2:30	Cloudy	Middle	3.5	28.50	28.50	28.50	7.87	7.87	7.87	26.59	26.59	26.59	78.1	78.3	79.0	5.22	5.24	5.29	1.33	1.25	1.28	<2	<2
	2:31		Middle	3.5	28.50	28.50	28.50	7.87	7.87	7.87	26.59	26.59	26.59	79.9	79.8	79.0	5.35	5.34	5.29	1.31	1.21	1.28	<2	<2
2/7/19	17:00	Cloudy	Middle	3.5	28.60	28.60	28.60	7.79	7.78	7.79	27.52	27.52	27.52	89.6	92.3	91.0	5.96	6.13	6.05	4.73	4.56	4.65	9	9.00
	17:01		Middle	3.5	28.60	28.60	28.60	7.79	7.79	7.79	27.52	27.52	27.52	89.6	92.3	91.0	5.96	6.13	6.05	4.73	4.56	4.65	9	9.00
4/7/19	19:31	Cloudy	Middle	3.5	27.20	27.20	27.20	8.33	8.33	8.33	26.29	26.29	26.29	94.7	92.3	92.9	6.50	6.33	6.38	2.86	2.66	2.76	6	6.00
	19:32		Middle	3.5	27.20	27.20	27.20	8.33	8.33	8.33	26.29	26.29	26.29	92.4	92.2	92.9	6.34	6.33	6.38	2.77	2.74	2.76	6	6.00
6/7/19	9:40	Fine	Middle	4.0	28.00	28.00	28.00	7.46	7.46	7.46	26.60	26.60	26.60	95.0	94.7	93.6	6.03	6.00	5.94	4.11	4.16	4.15	<2	<2
	9:42		Middle	4.0	28.00	28.00	28.00	7.46	7.46	7.46	26.60	26.60	26.60	92.2	92.6	93.6	5.85	5.88	5.94	4.16	4.17	4.15	<2	<2
8/7/19	13:20	Cloudy	Middle	4.0	28.30	28.30	28.35	7.49	7.49	7.50	26.15	26.15	26.15	78.2	77.2	79.1	5.28	5.10	5.30	3.25	3.25	3.17	3	3.50
	13:22		Middle	4.0	28.40	28.40	28.35	7.50	7.50	7.50	26.15	26.15	26.15	80.4	80.6	79.1	5.40	5.41	5.30	3.08	3.08	3.17	4	3.50
10/7/19	14:23	Fine	Middle	4.0	28.20	28.20	28.15	7.91	7.91	7.91	25.15	25.15	25.15	78.8	79.2	78.5	5.32	5.37	5.32	31.21	31.21	<u>31.29</u>	<2	<2
	14:25		Middle	4.0	28.10	28.10	28.15	7.91	7.91	7.91	25.14	25.14	25.15	78.7	77.4	78.5	5.34	5.25	5.32	31.37	31.37	<u>31.29</u>	<2	<2
12/7/19	14:30	Cloudy	Middle	3.5	27.60	27.60	27.75	7.51	7.51	7.52	28.02	28.02	28.02	85.0	84.9	84.7	5.71	5.71	5.69	3.36	3.38	3.39	7	7.00
	14:32		Middle	3.5	27.90	27.90	27.75	7.52	7.52	7.52	28.01	28.01	28.02	84.6	84.4	84.7	5.68	5.67	5.69	3.41	3.42	3.39	7	7.00
15/7/19	17:45	Cloudy	Middle	3.5	30.10	30.10	30.10	7.97	7.97	7.97	24.02	24.02	24.02	90.1	93.1	92.1	5.95	6.15	6.08	2.88	2.96	2.90	5	4.50
	17:46		Middle	3.5	30.10	30.10	30.10	7.97	7.97	7.97	24.02	24.02	24.02	93.9	91.3	92.1	6.20	6.03	6.08	2.91	2.84	2.90	4	4.50
17/7/19	20:45	Cloudy	Middle	3.5	27.70	27.70	27.70	7.80	7.79	7.79	28.52	28.52	28.52	81.8	82.8	84.0	5.47	5.53	5.62	2.31	2.44	2.29	4	4.50
	20:46		Middle	3.5	27.70	27.70	27.70	7.79	7.79	7.79	28.52	28.52	28.52	86.7	84.8	84.0	5.79	5.67	5.62	2.23	2.17	2.29	5	4.50
19/7/19	18:46	Cloudy	Middle	3.5	27.00	27.00	27.00	7.73	7.73	7.73	29.52	29.52	29.52	89.0	90.1	89.1	6.01	6.08	6.01	3.62	3.55	3.44	5	4.50
	18:47		Middle	3.5	27.00	27.00	27.00	7.73	7.73	7.73	29.52	29.52	29.52	88.0	89.1	89.1	5.94	6.01	6.01	3.26	3.32	3.44	4	4.50
22/7/19	9:20	Fine	Middle	4.0	25.80	25.80	25.90	6.43	6.43	6.44	31.35	31.35	31.35	72.7	72.4	73.4	4.94	4.93	5.10	7.14	7.14	7.15	3	2.50
	9:22		Middle	4.0	26.00	26.00	25.90	6.45	6.45	6.44	31.35	31.35	31.35	74.3	74.0	73.4	5.50	5.03	5.10	7.15	7.17	7.15	2	2.50
25/7/19	2:08	Fine	Middle	4.0	27.20	27.20	27.20	7.77	7.77	7.77	29.60	29.60	29.60	88.0	85.1	85.3	5.89	5.69	5.71	1.27	1.35	1.33	3	3.00
	2:09		Middle	4.0	27.20	27.20	27.20	7.77	7.77	7.77	29.60	29.60	29.60	84.4	83.7	85.3	5.64	5.60	5.71	1.38	1.31	1.33	3	3.00

Remarks:  
Single underline denotes exceedance over Action Level.  
Double underline denotes exceedance over Limit Level.



**Water Monitoring Result at C1 - HKCEC  
Mid-Ebb Tide**

Date	Time	Weather Condition	Sampling Depth		Water Temperature			pH			Salinity			DO Saturation			DO			Turbidity			Suspended Solids	
					°C		-		ppt		%		mg/L		NTU		mg/L							
					Value	Average	Value	Average	Value	Average	Value	Average	Value	Average	Value	Average	Value	Average	Value	Average	Value	Average		
29/6/19	10:50	Fine	Middle	2.5	28.70	28.70	28.75	7.79	7.79	7.80	25.00	25.00	25.00	85.0	87.0	87.2	5.71	5.87	5.86	3.45	3.43	3.45	<2	<2
	10:52		Middle	2.5	28.80	28.80		7.81	7.81		24.99	24.99		88.4	88.2		5.94	5.93		3.46	3.45			
2/7/19	13:00	Cloudy	Middle	2.5	28.70	28.70	28.70	7.93	7.93	7.95	26.85	28.85	27.35	105.6	108.8	107.4	7.23	7.24	7.20	3.75	3.68	3.70	6	6.50
	13:02		Middle	2.5	28.70	28.70		7.96	7.96		26.85	26.85		107.3	107.8		7.14	7.18		3.69	3.69		7	
4/7/19	14:20	Fine	Middle	2.5	28.40	28.40	28.45	7.65	7.65	7.67	26.24	26.24	26.26	97.7	97.5	96.8	6.56	6.54	6.50	2.83	2.81	2.79	6	5.50
	14:22		Middle	2.5	28.50	28.50		7.69	7.69		26.28	26.28		96.0	96.0		6.44	6.44		2.76	2.77		5	
6/7/19	14:35	Fine	Middle	3.0	28.60	28.60	28.70	7.52	7.52	7.53	24.86	24.86	24.86	94.2	93.4	92.5	6.34	6.28	6.22	3.16	3.11	3.13	<2	2.00
	14:37		Middle	3.0	28.80	28.80		7.53	7.53		24.86	24.86		91.2	91.0		6.13	6.11		3.11	3.12		2	
8/7/19	17:15	Cloudy	Middle	2.5	28.50	28.50	28.55	7.55	7.55	7.55	24.34	24.34	24.34	94.8	95.3	95.0	6.42	6.45	6.43	2.28	2.24	2.26	7	6.50
	17:17		Middle	2.5	28.60	28.60		7.55	7.55		24.33	24.33		95.1	94.9		6.44	6.42		2.25	2.26		6	
10/7/19	18:42	Cloudy	Middle	3.0	27.40	27.40	27.40	8.05	8.05	8.05	24.26	24.26	24.26	94.6	93.2	94.3	6.53	6.43	6.51	1.30	1.25	1.35	2	2.00
	18:43		Middle	3.0	27.40	27.40		8.05	8.05		24.26	24.26		93.5	96.0		6.45	6.62		1.27	1.58		2	
12/7/19	9:20	Fine	Middle	2.5	27.70	27.70	27.75	7.55	7.55	7.55	25.98	25.98	25.98	92.6	92.3	91.6	6.29	6.27	6.22	3.00	3.00	2.98	5	4.50
	9:22		Middle	2.5	27.80	27.80		7.55	7.55		25.97	25.97		90.9	90.5		6.17	6.15		2.98	2.95		4	
15/7/19	10:45	Fine	Middle	2.5	29.70	29.70	29.80	7.90	7.90	7.91	23.06	23.06	23.08	116.6	117.0	116.1	7.78	7.80	7.74	3.45	3.48	3.48	4	4.50
	10:47		Middle	2.5	29.90	29.90		7.92	7.92		23.10	23.10		115.3	115.5		7.68	7.70		3.49	3.49		5	
17/7/19	13:00	Fine	Middle	2.5	28.40	28.40	28.50	6.99	6.99	6.99	27.44	27.44	27.44	107.5	107.4	106.9	7.16	7.15	7.12	4.77	4.76	4.76	4	4.50
	13:02		Middle	2.5	28.60	28.60		6.99	6.99		27.43	27.43		106.7	106.0		7.10	7.05		4.75	4.76		5	
19/7/19	-	Amber Rainstorm Warning	Middle	-	-	-	-	-	-	-	-	-	-	-	-	-	-	-	-	-	-	-	-	-
	-		Middle	-	-	-		-	-		-	-		-	-		-	-		-	-		-	
22/7/19	16:15	Cloudy	Middle	3.0	26.70	26.70	26.75	6.61	6.61	6.61	30.68	30.68	30.69	92.2	92.2	91.7	6.21	6.21	6.18	3.08	3.08	3.08	3	3.00
	16:17		Middle	3.0	26.80	26.80		6.61	6.61		30.69	30.69		91.3	91.2		6.15	6.14		3.08	3.07		3	
24/7/19	16:55	Fine	Middle	2.5	27.70	27.70	27.75	6.80	6.80	6.82	29.35	29.35	29.35	117.1	116.7	116.3	7.81	7.76	7.75	4.59	4.68	4.64	6	5.50
	16:57		Middle	2.5	27.80	27.80		6.83	6.83		29.35	29.35		116.1	115.2		7.74	7.68		4.66	4.61		5	

Remarks:  
Single underline denotes exceedance over Action Level.  
Double underline denotes exceedance over Limit Level.



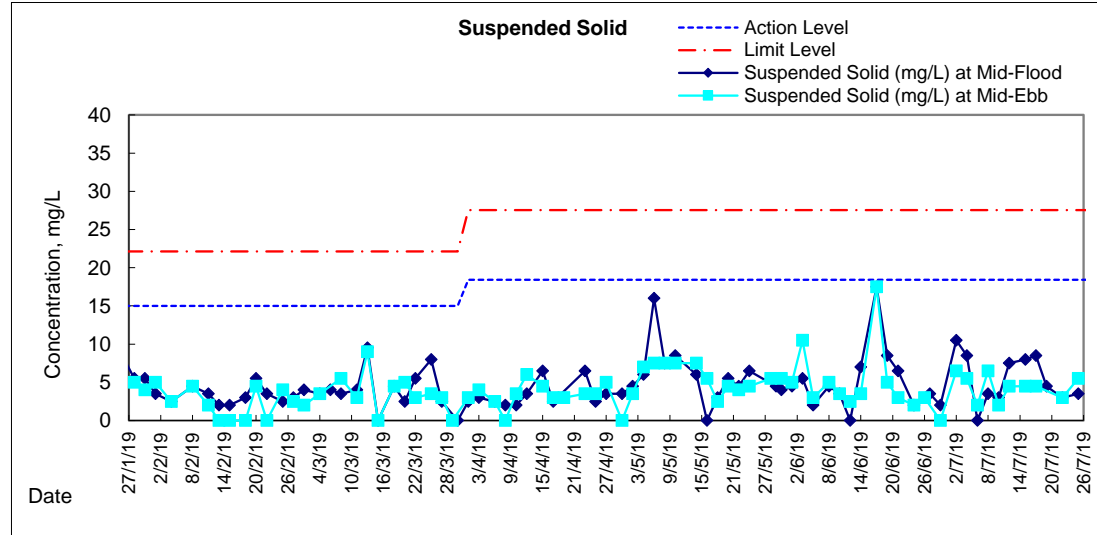
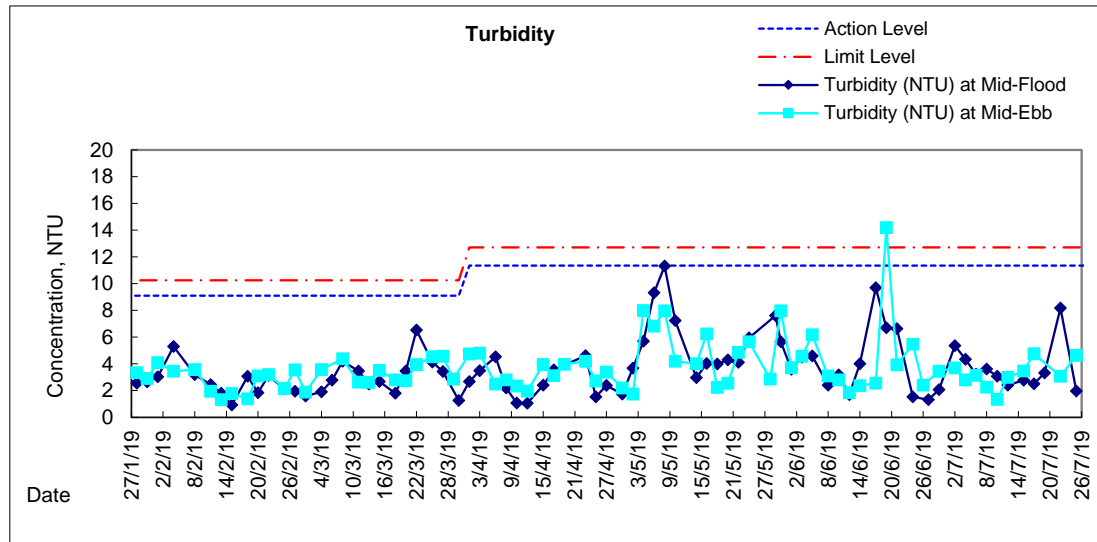
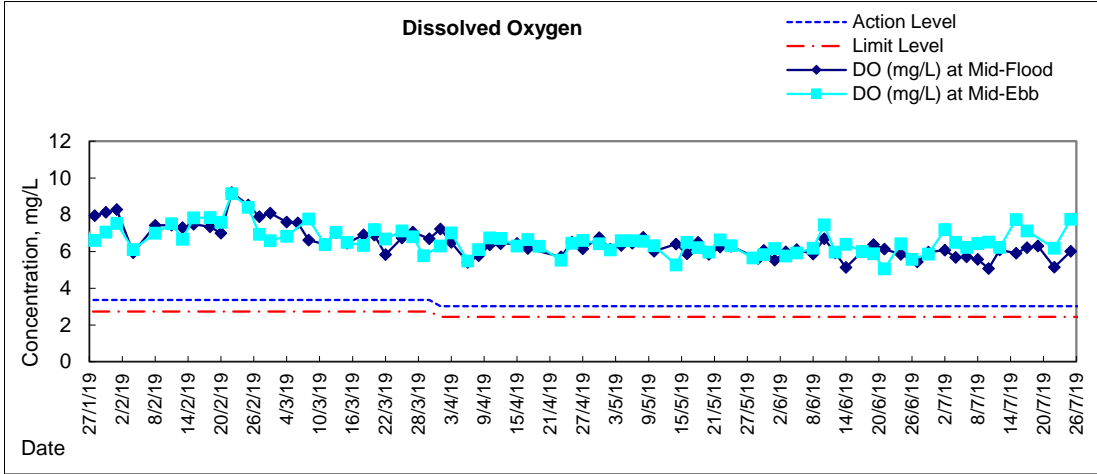
**Water Monitoring Result at RW21-P789 - GEC/CRB/SHK  
Mid-Ebb Tide**

Date	Time	Weather Condition	Sampling Depth		Water Temperature			pH			Salinity			DO Saturation		DO		Turbidity		Suspended Solids				
					°C		-		ppt		%		mg/L		NTU		mg/L							
					Value	Average	Value	Average	Value	Average	Value	Average	Value	Average	Value	Average	Value	Average	Value	Average				
29/6/19	10:25	Fine	Middle	3.5	29.10	29.10	29.15	7.72	7.72	7.74	24.75	24.75	24.75	90.4	90.6	90.2	6.03	6.05	6.02	3.02	3.05	3.05	<2	<2
	10:27		Middle	3.5	29.20	29.20		7.76	7.76		24.75	24.75		90.1	89.5		6.02	5.98		3.06	3.07			
2/7/19	14:30	Cloudy	Middle	3.5	28.30	28.30	28.35	8.01	8.03	8.04	27.07	27.07	27.08	114.9	113.4	112.6	7.69	7.59	7.54	5.76	5.80	5.80	11	11.00
	14:32		Middle	3.5	28.40	28.40		8.05	8.05		27.08	27.08		111.8	110.3		7.48	7.38		5.81	5.83			
4/7/19	14:45	Fine	Middle	3.5	28.30	28.30	28.30	7.71	7.71	7.72	26.82	26.82	26.82	79.8	79.7	79.7	5.35	5.35	5.34	3.27	3.26	3.30	5	5.50
	14:47		Middle	3.5	28.30	28.30		7.73	7.73		26.81	26.81		79.6	79.6		5.34	5.33		3.33	3.34			
6/7/19	14:45	Fine	Middle	4.0	28.40	28.40	28.50	7.51	7.51	7.51	25.32	25.32	25.32	85.6	85.5	85.3	5.77	5.76	5.75	3.75	3.73	3.73	<2	<2
	14:47		Middle	4.0	28.60	28.60		7.51	7.51		25.31	25.31		85.0	84.9		5.73	5.72		3.71	3.72			
8/7/19	16:25	Cloudy	Middle	3.5	28.70	28.70	28.80	7.50	7.50	7.50	24.84	24.84	24.84	85.9	85.5	84.8	5.77	5.75	5.69	2.66	2.69	2.69	7	7.00
	16:27		Middle	3.5	28.90	28.90		7.50	7.50		24.83	24.83		84.1	83.6		5.64	5.61		2.71	2.70			
10/7/19	19:23	Cloudy	Middle	4.0	27.60	27.60	27.60	7.90	7.90	7.90	24.15	24.15	24.15	91.9	93.5	92.6	6.33	6.45	6.38	1.46	1.50	1.53	2	2.00
	19:24		Middle	4.0	27.60	27.60		7.90	7.90		24.15	24.15		92.9	92.1		6.40	6.34		1.54	1.61			
12/7/19	9:30	Fine	Middle	3.5	27.50	27.50	27.50	7.50	7.50	7.50	26.81	26.81	26.81	84.0	84.3	83.8	5.71	5.73	5.70	2.11	2.14	2.15	6	6.50
	9:32		Middle	3.5	27.50	27.50		7.50	7.50		26.81	26.81		83.6	83.4		5.68	5.66		2.16	2.17			
15/7/19	11:45	Fine	Middle	3.5	29.30	29.30	29.35	7.92	7.92	7.92	23.20	23.20	22.95	115.3	116.5	116.6	7.75	7.85	7.84	2.94	2.85	2.90	5	5.50
	11:47		Middle	3.5	29.40	29.40		7.92	7.92		23.19	22.19		117.0	117.4		7.87	7.89		2.88	2.91			
17/7/19	14:00	Fine	Middle	3.5	28.20	28.20	28.25	7.08	7.08	7.09	27.30	27.30	27.30	115.2	114.9	114.6	7.70	7.68	7.67	5.62	5.62	5.63	6	6.50
	14:02		Middle	3.5	28.30	28.30		7.10	7.10		27.30	27.30		114.0	114.4		7.63	7.65		5.63	5.63			
19/7/19	-	Amber Rainstorm Warning	Middle	-	-	-	-	-	-	-	-	-	-	-	-	-	-	-	-	-	-	-	-	-
	-		Middle	-	-	-		-	-		-	-		-	-		-	-		-	-		-	
22/7/19	14:30	Cloudy	Middle	3.5	26.70	26.70	26.75	6.62	6.62	6.63	30.85	30.85	30.85	84.6	84.6	84.6	5.69	5.69	5.69	2.94	2.94	2.94	2	2.00
	14:32		Middle	3.5	26.80	26.80		6.64	6.64		30.85	30.85		84.4	84.9		5.67	5.71		2.94	2.94			
24/7/19	16:05	Fine	Middle	3.5	27.70	27.70	27.80	6.83	6.83	6.84	29.67	29.67	29.67	110.5	110.7	110.6	7.35	7.37	7.36	2.38	2.37	2.37	3	3.00
	16:07		Middle	3.5	27.90	27.90		6.84	6.84		29.67	29.67		110.7	110.3		7.37	7.34		2.36	2.38			

Remarks:  
Single underline denotes exceedance over Action Level.  
Double underline denotes exceedance over Limit Level.



### Graphic Presentation of Water Quality Result of C1 - HKCEC





# Graphic Presentation of Water Quality Result of RW21-P789 - GEC/CRC/SHK

